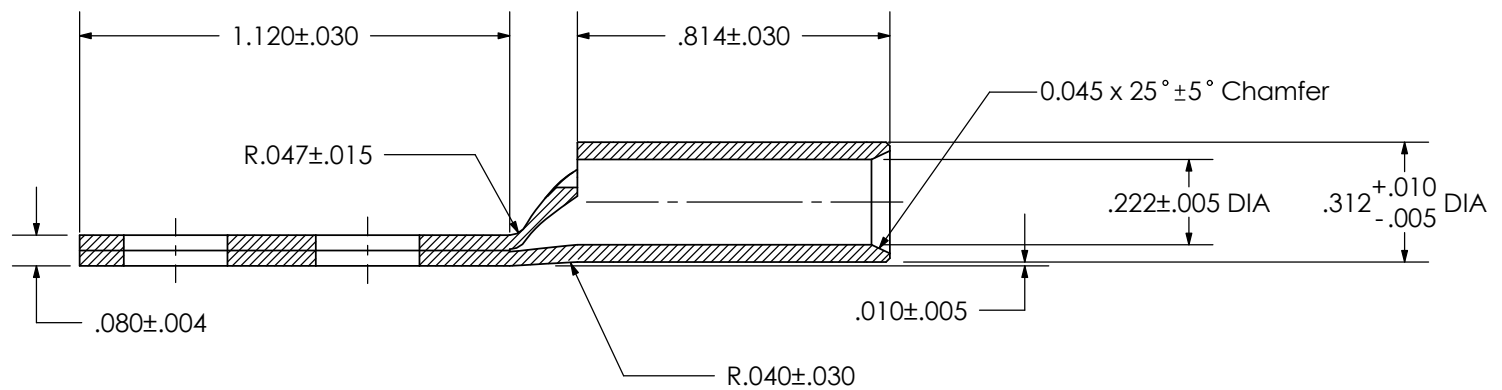
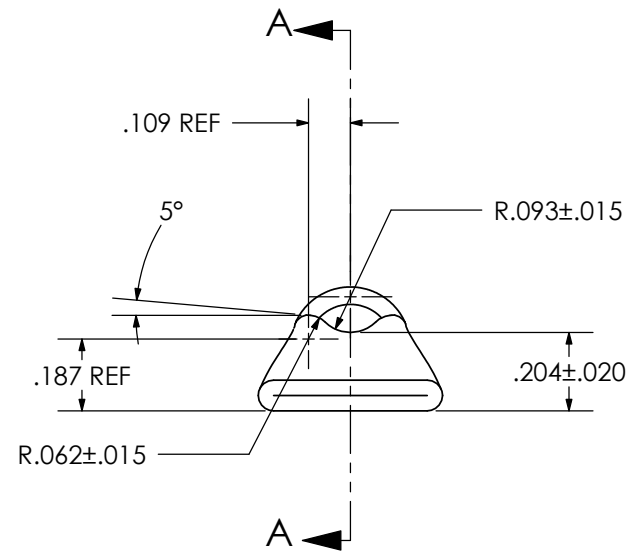
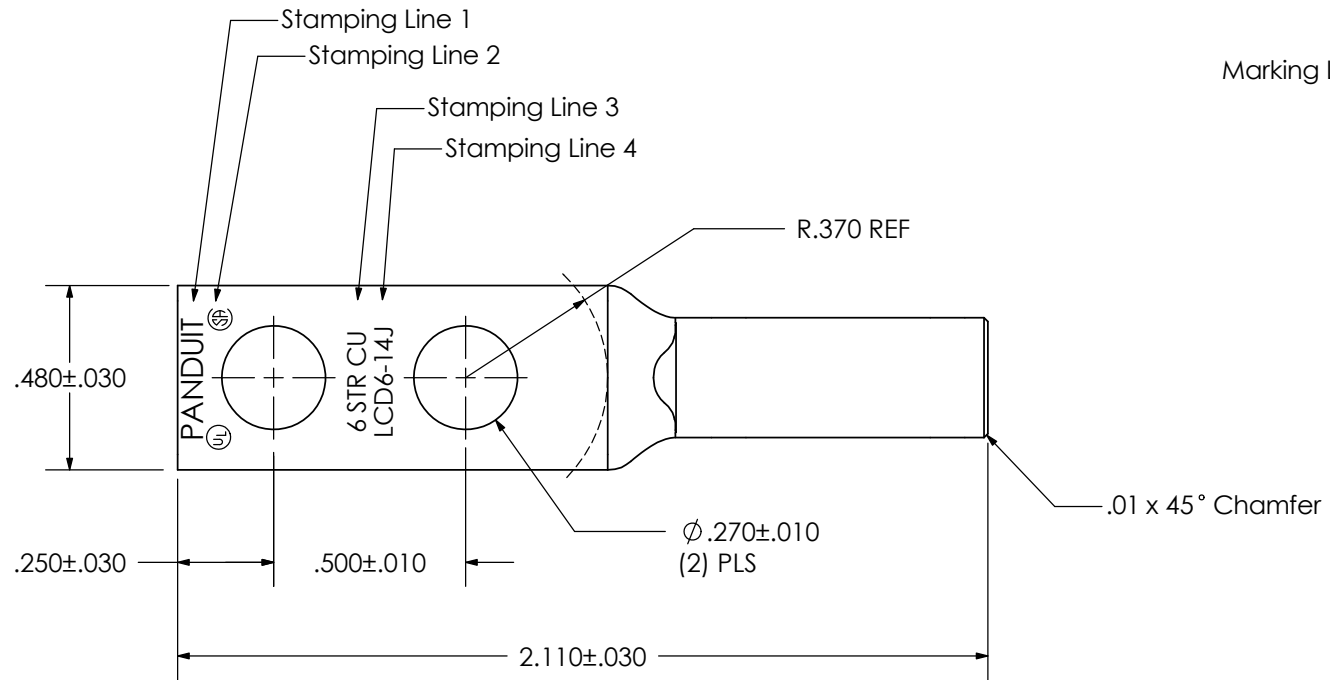
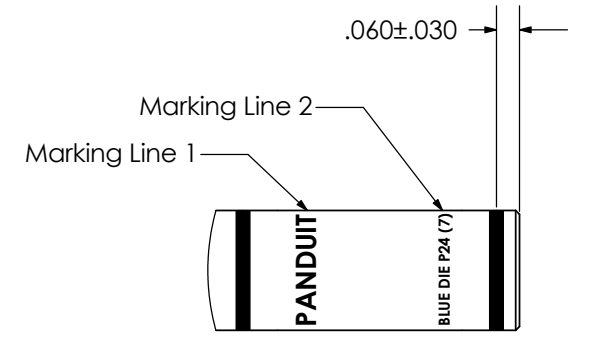


Notes:

1. Material: Copper tubing PCC022, per Panduit Material Specification T-MS-6.
2. Plating: Electro tin plate 200 micro inches minimum over all internal and external surfaces.
3. Parts to be free from burrs, .015 max, excessive scratches and indentations.
4. Ink mark barrel per Panduit drawing N01124FY .
5. Barrel marking shall be located so that the "PANDUIT" is located atop the barrel O.D. as shown in the Markings Location Detail.



SECTION A-A
SCALE 2:1

Part Weight: 0.0221 lb
 Mat'l Allocation Weight: 0.0318 lb
 Plating Area: 2.8901 sq. in.
 Pounds per Tote: 15.5
 Plating Half Barrel Quantity: 700
 Box Quantity: 50
 Box: PBX433
 Label: TT33GBWA
 Stuffer: T-PMPI-63-PC
 Cut Length: 2.600+/-0.004

												LCD6-14J-L Product Control Drawing	
										UNLESS OTHERWISE SPECIFIED DIMENSIONAL TOLERANCES ARE: (.X) ± (.XXX) ± (.XX) ± ANGLES ±		UNLESS OTHERWISE SPECIFIED, ALL DIMENSIONS ARE GIVEN IN INCHES, THIRD ANGLE PROJECTION	
										DRAWN BY DRL	MAT'L:	SCALE 2:1	
										DATE 4/22/02	SEE NOTE 1 ABOVE	DRAWING NO / CAD FILE LCD6-14J-PCD	DWG B SIZE
01	9/07	JHNU	JHNU	REMOVED NAVY NUMBER FROM STAMP	ECN	CUST	QA	APP	CHK'D				
REV	DATE	BY	CHK	DESCRIPTION	ECN	CUST	QA	APP	CHK'D				